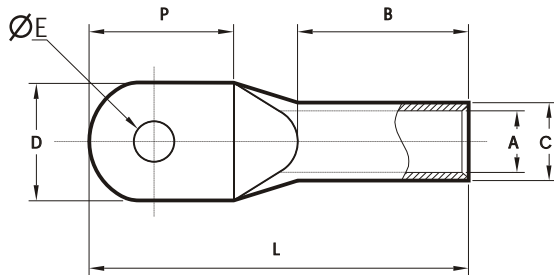


COMPRESSION CABLE LUGS, N-SERIES

MATERIAL : E-COPPER

FINISH : ELECTRO-TINNED

FEATURES : WITH OR WITHOUT INSPECTION HOLE



CABLE mm ²	ØE	CAT. NO.	DIMENSIONS IN mm						PER BOX
			A	C	D	P	B	L	
6	5.2	SCNS6-5	3.8	5.5	10	14	9	28	1000
	6.2	SCNS6-6							
10	5.2	SCNS10-5	4.5	6.2	11	15	9	28	1000
	6.2	SCNS10-6			16				
	10.5	SCNS10-10			25	12	43		
16	6.2	SCNS16-6	5.5	7	12	16	12	36	500
	8.2	SCNS16-8			16				
	10.5	SCNS16-10			16	24	12	43	
	13	SCNS16-12							
25	6.2	SCNS25-6	6.8	8.8	13	16	12	37	300
	8.2	SCNS25-8			16			25	
	10.5	SCNS25-10				18			
	13	SCNS25-12							
35	6.2	SCNS35-6	8.2	10.6	15	20	18	43	200
	8.2	SCNS35-8			17			26	
	10.5	SCNS35-10				21	25		
	13	SCNS35-12			25	27	23	62	
50	6.2	SCNS50-6	9.5	12.4	18	23	16	49	150
	8.2	SCNS50-8							
	10.5	SCNS50-10							
	13	SCNS50-12							
70	8.2	SCNS70-8	11.2	14.7	21	25	20	55	100
	10.5	SCNS70-10							
	13	SCNS70-12							
	14	SCNS70-14							
95	10.5	SCNS95-10	13.5	17.4	25	27	23	62	75
	13	SCNS95-12						33	
	14	SCNS95-14							
	17	SCNS95-16							

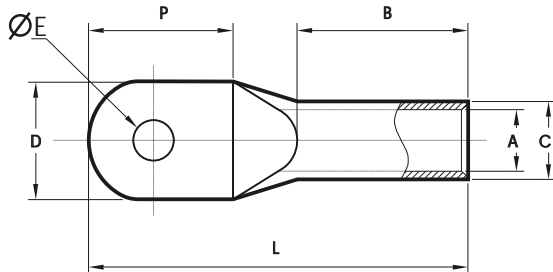


COMPRESSION CABLE LUGS, N-SERIES

MATERIAL : E-COPPER

FINISH : ELECTRO-TINNED

FEATURES : WITH OR WITHOUT INSPECTION HOLE



CABLE mm ²	STUD HOLE	CAT. NO.	DIMENSIONS IN mm						PKG. QTY. PER BOX
			A	C	D	P	B	L	
120	10.5	SCNS120-10	15	19.4	28	28	28	72	50
	13	SCNS120-12							
	14	SCNS120-14							
	17	SCNS120-16							
	21	SCNS120-20				33	77		
150	10.5	SCNS150-10	16.5	21	30	32	30	75	40
	13	SCNS150-12							
	17	SCNS150-16							
	21	SCNS150-20							
185	10.5	SCNS185-10	18.5	23.5	34	38	31	85	30
	13	SCNS185-12							
	14	SCNS185-14							
	17	SCNS185-16							
	21	SCNS185-20							
240	13	SCNS240-12	21	26.5	38	43	35	95	20
	17	SCNS240-16							
	21	SCNS240-20							
300	17	SCNS300-16	23.5	30	43	47	44	110	15
	21	SCNS300-20							
400	17	SCNS400-16	28.5	36.5	52	48	40	112	10
	21	SCNS400-20							
500	17	SCNS500-16	30	37	55	50	75	148	5
	21	SCNS500-20							
630	17	SCNS630-16	34	41	60	50	70	148	5
	21	SCNS630-20							

