

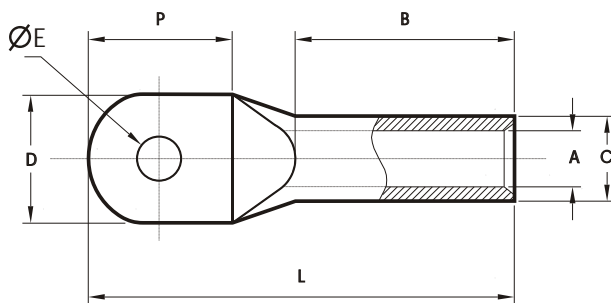
COMPRESSION CABLE LUGS

STANDARD : DIN 46235

MATERIAL : E-COPPER

FINISH : ELECTRO-TINNED

FEATURES : WITHOUT INSPECTION HOLE



CABLE mm ²	ØE	CAT. NO.	DIMENSIONS IN mm						PER BOX
			A	C	D	P	B	L	
10	6.4	SCDN10-6	4.5	7	9	16	10	35	400
	8.4	SCDN10-8			13	20		37	
16	6.4	SCDN16-6	5.5	8.5	13	15.5	20	44	150
	8.4	SCDN16-8				20		46	
25	6.4	SCDN25-6	7	10	14	15.5	20	46	150
	8.4	SCDN25-8			16	20		48	
35	8.4	SCDN35-8	8.2	12.5	17	20	20	54	100
	10.5	SCDN35-10			19	24			
50	13	SCDN35-12	10	14.5	21	26	28	64	75
	8.4	SCDN50-8			20	20			
70	10.5	SCDN50-10	11.5	16.5	22	24	28	67	50
	13	SCDN50-12			24	26			
95	8.4	SCDN70-8	13.5	19	24	24	35	78	50
	10.5	SCDN70-10			26	26			
120	13	SCDN70-12	15.5	21	28	24	35	86	25
	17	SCDN95-10			31	31			
150	10.5	SCDN95-12	17	23.5	32	33	35	94	25
	13	SCDN120-10			39	33		97	
185	17	SCDN120-12	19	25.5	34	39	40	101	20
	10.5	SCDN120-16			31	31		108	
240	13	SCDN150-10	21.5	29	37	33	40	111	10
	17	SCDN150-12			39	33		113	
300	21	SCDN150-16	24.5	31	42	43	50	122	10
	17	SCDN185-10			31	31			
400	13	SCDN185-12	27.5	38.5	48	40	70	140	5
	17	SCDN185-16			39	33			
500	21	SCDN240-12	31	42	54	50	70	150	5
	17	SCDN240-16			39	33			
630	21	SCDN240-20	34	44	60	50	80	160	5
	17	SCDN300-16			31	31			
800	21	SCDN300-20	40	52	75	60	100	195	1
	27	SCDN400-16			44	44			
1000	21	SCDN400-20	44	58	85	60	100	195	1
	27	SCDN500-16			44	44			

