

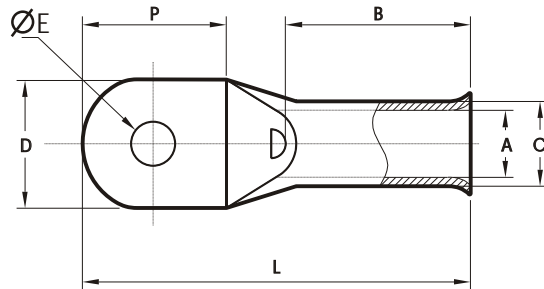
## COMPRESSION CABLE LUGS - BELL MOUTHED

MATERIAL : E-COPPER

FINISH : ELECTRO-TINNED

FEATURES : BELL MOUTH ENTRY, WITH OR WITHOUT INSPECTION HOLE

SUITABILITY : FOR STRANDED TO FINE STRANDED COPPER CABLE



CABLE mm <sup>2</sup>	ØE	CAT NO.	DIMENSIONS IN mm						PERBOX		
			A	C	D	P	B	L			
10	5.2	SCBM10-5	4.4	6.9	11	11	10	29	500		
	6.2	SCBM10-6			12	18		11		38	
	8.2	SCBM10-8					17			24	41
	10.5	SCBM10-10									
	13	SCBM10-12									
16	5.2	SCBM16-5	5.6	8	11	11	11	29	500		
	6.2	SCBM16-6			18	22		11		38	
	8.2	SCBM16-8					18			22	42
	10.5	SCBM16-10									
	13	SCBM16-12									
25	6.2	SCBM25-6	7	9.5	13	19	14	42	200		
	8.2	SCBM25-8			16	23		14		47	
	10.5	SCBM25-10									
	13	SCBM25-12									
35	6.2	SCBM35-6	8.2	11	16	19	15	43	200		
	8.2	SCBM35-8			18	22		15		48	
	10.5	SCBM35-10					20			24	50
	13	SCBM35-12									
	14	SCBM35-14									
50	6.5	SCBM50-6	9.5	12.1	18	18	18	48	150		
	8.2	SCBM50-8			20	27		18		52	
	10.5	SCBM50-10					22			27	55
	13	SCBM50-12									
	14	SCBM50-14									
	17	SCBM50-16									
70	6.2	SCBM70-6	11.5	15	21	20	19	50	75		
	8.2	SCBM70-8			21	22		19		54	
	10.5	SCBM70-10					24			34	63
	13	SCBM70-12									
	14	SCBM70-14									
	17	SCBM70-16									
95	8.2	SCBM95-8	13.5	17	25	24	24	60	50		
	10.5	SCBM95-10			25	32		24		67	
	13	SCBM95-12									
	14	SCBM95-14									
	17	SCBM95-16									
120	10.5	SCBM120-10	15	19	28	29	29	72	40		
	13	SCBM120-12			28	33		29		76	
	14	SCBM120-14									
	17	SCBM120-16									
	21	SCBM120-20									



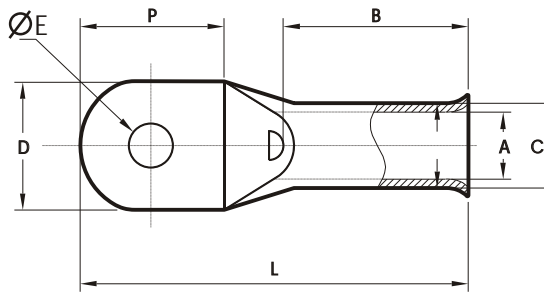
## COMPRESSION CABLE LUGS - BELL MOUTHED

MATERIAL : E-COPPER

FINISH : ELECTRO-TINNED

FEATURES : BELL MOUTH ENTRY, WITH OR WITHOUT INSPECTION HOLE

SUITABILITY : FOR STRANDED TO FINE STRANDED COPPER CABLE



CABLE mm <sup>2</sup>	ØE	CAT NO.	DIMENSIONS IN mm						PER BOX
			A	C	D	P	B	L	
150	10.5	SCBM150-10	16.5	21	30	32	30	74	30
	13	SCBM150-12							
	14	SCBM150-14							
	17	SCBM150-16							
	21	SCBM150-20							
185	10.5	SCBM185-10	18.5	23.4	34	37	32	85	25
	13	SCBM185-12							
	14	SCBM185-14							
	17	SCBM185-16							
	21	SCBM185-20							
240	10.5	SCBM240-10	21	26	38	42	36	93	15
	13	SCBM240-12							
	14	SCBM240-14							
	17	SCBM240-16							
	21	SCBM240-20							
300	10.5	SCBM300-10	23	28	40	47	44	110	10
	13	SCBM300-12							
	14	SCBM300-14							
	17	SCBM300-16							
	21	SCBM300-20							
400	13	SCBM400-12	27	36	51	48	44	111	5
	14	SCBM400-14							
	17	SCBM400-16							
	21	SCBM400-20							
500	10.5	SCBM500-10	30	38.1	55	50	56	127	5
	13	SCBM500-12							
	14	SCBM500-14							
	17	SCBM500-16							
	21	SCBM500-20							
630	10.5	SCBM630-10	34	44	62	52	50	130	5
	13	SCBM630-12							
	14	SCBM630-14							
	17	SCBM630-16							
	21	SCBM630-20							
800	21	SCBM800-20	38	49	70	68	56	164	1
	27	SCBM800-25							
1000	21	SCBM1000-20	42.5	53	77	68	56	169	1
	27	SCBM1000-25							

